



ATLAS Consultation Pack

12/05/2021

Summary

Francesca Carr from the SEND transformation programme will be attending ATLAS this week! She will be receiving your action cards to help raise your voices further! As usual we also have a number of information and updates for you. Consultation work this week is all on the theme of mental health.

Staff this week:

Sarah, Sabrina, Holly and Darren!

Agenda Points!

- Information and Updates
 - RHS Garden Wisley Trip
 - The Big Ask survey
 - Surrey young Mayor
 - School exclusion project
 - ATLAS Group changes
- Action Card Wording (**18+ only**)
- Francesca Carr attending ATLAS
- Barriers to Mental Health Services
- Mental Health Support Team - Request for Support Form Review

Get Involved!

Join us online via Zoom every Wednesday between 5 to 7 pm! Chat opens 30 minutes earlier at 4:30pm for anyone who wants to have a casual chat beforehand.

If you are unable to attend you can still have your voice heard by contacting us by email, through social media or by texting/phoning a member of the ATLAS staff.





Virtual ATLAS

12/05/2021



Ground Rules:

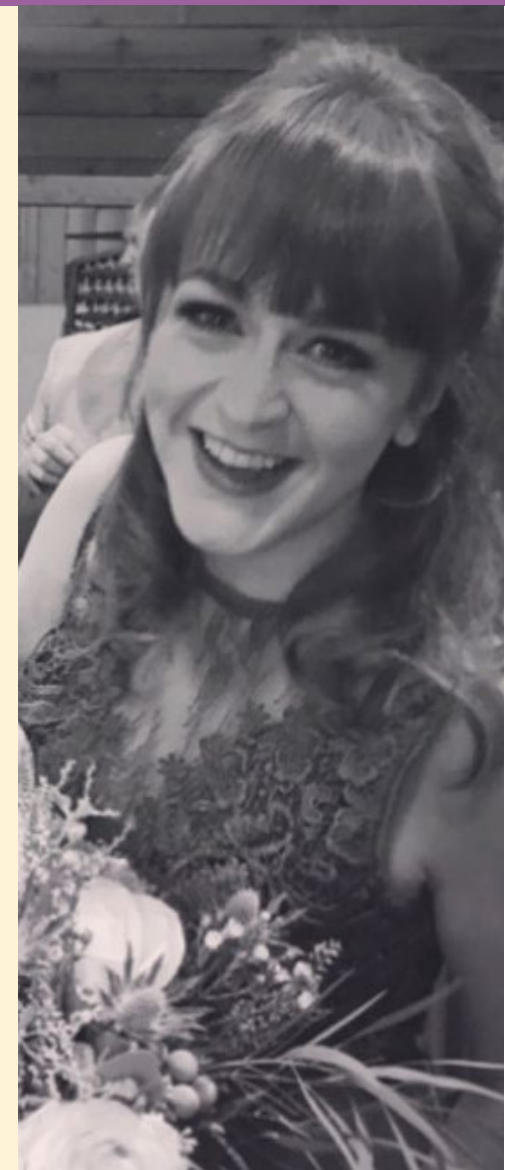
- Please do not talk over each other and mute yourself if there is background noise
- If you disappear from the call unexpectedly, one of us will check-in with you as soon as possible
- You can use Zoom chat to private message a staff member if you need to



Francesca Carr Visiting

“My name is Frankiee and I have just started working for Surrey Council. My role is quite exciting as I get to work with children and young people, families, carers, council staff and partner organisations to make sure your experiences (the good and the bad) help to improve the support we provide for you both now and in the future.”

Frankiee is here to meet you today and answer any questions you have. She will be here for about 30-40 mins from 6:10pm 😊





Agenda

- **Check-in**
- Information and Updates
 - Wisley Trip
 - The Big Ask survey
 - Surrey young Mayor
 - School exclusion project
 - ATLAS Group changes
 - Action Cards
- Barriers to Mental Health Services
- **Break**
- Francesca Carr attending ATLAS
- Mental Health Support Team - Request for Support Form Review
- **Check Out**



Check In



20 mins



Information and Updates





Wisley Trip

We have finally got a date and time for our first social meet up since the Pandemic.

So we are going to go to Wisley on Wednesday 2nd June. We have a booking at 2pm till 4pm.

We are all looking forward to meeting you all in person.





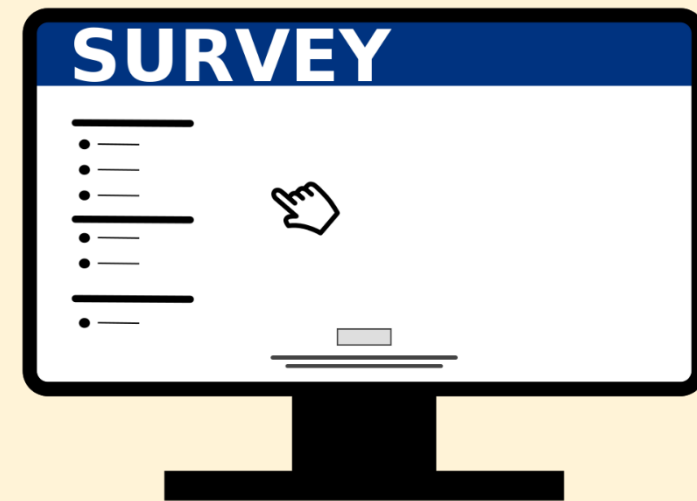
The Big Ask survey

Have you completed the Big Ask Survey?

This is the largest ever survey of children and young people in England. The survey will use what children and young people say to show the government what they think, and what children need to live happier lives.

This survey will only take 5-10 minutes to complete:

<https://www.childrenscommissioner.gov.uk/thebigask/>





Surrey Young Mayor

We are on the hunt for the next Young Mayor of Surrey!

This is an exciting position where applicants can represent and act upon the views of young people, support youth-led projects, attend official events, and work alongside the Chairman of Surrey on issues that affect young people.

An election campaign will be held throughout June, where candidates will be asked to write a manifesto and present this to young people across Surrey.

If you are interested in applying to be the next Young Mayor of Surrey, submit your application of interest using this link: **<https://bit.ly/registeryoungmayor>**



School exclusion project

Royal Holloway University are undertaking a piece of work around school exclusion and want to interview **10-15 young people (16+)** who have had experience of being permanently excluded from school.

Interviews will be between 30-60 minutes and participants will receive a **£10 voucher for taking part.**

The feedback will be used to help other young people, parents and carers through supporting inclusion in Surrey. The university will then write recommendations for Surrey County Council about how they can prevent permanent school exclusions.

Is anyone over 16 interested?

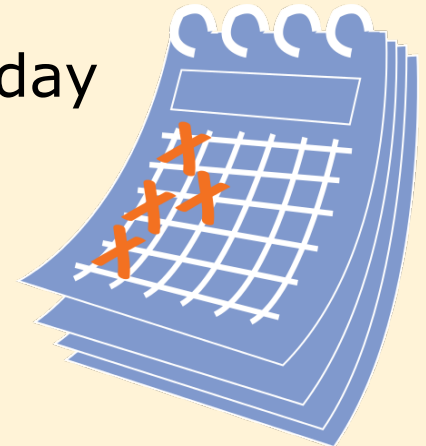


ATLAS Group changes

As discussed last week, 18+ group will be remaining weekly!

For your information, there will be changes to the younger groups:

- Ages 7 to 13 will meet once a month on a Thursday
- 13 to 18 fortnightly on a Wednesday



All of ATLAS will meet once every other month for an in-person activity session!



Action Card Wording

Reminder of the method Olivia learnt in training:

As a.. I want.. So that

- **As a** –the role
- **I want** –the need
- **So that** –the value

Instead of rewording the overall Action Card in this way, would you be happy for us to reword the individual/set of actions that professionals need to take to achieve the Action Card.

For example, underneath the Stigma and Ableism card that exists already: As a group of young people with additional needs and disabilities, ATLAS would like professionals to stop using the term SEND (special education needs and disabilities), because using 'special' to describe people with additional needs and disabilities is ableist and promotes stigma and discrimination.



Barriers to Mental Health Services

A lady from the Surrey Heath Mental Health Support Team within SABP is doing a presentation for her University on the 17th May on the **barriers that children and young people face when accessing mental health services.** It would be very powerful and insightful to find out what barriers children and young people in Surrey may experience and what ideas they have for how these can be overcome.

- **What kind of barriers are there for young people accessing mental health support/services?**
- **How can barriers to mental health services in Surrey be overcome?**
- **Is there anything that is currently happening in Surrey/other places that helps young people access mental health services?**



Break Time!

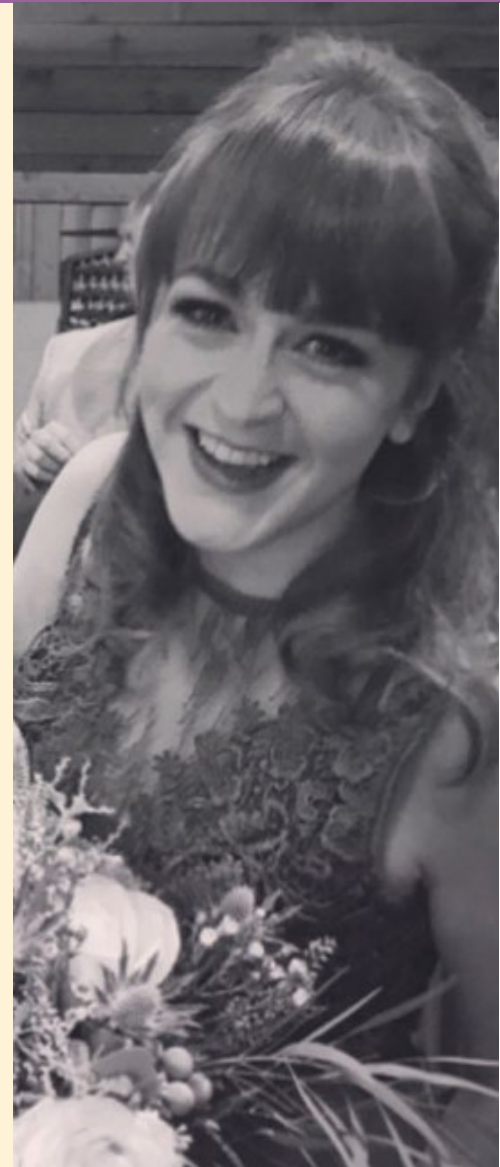




Francesca Carr Visiting

“My name is Frankiee and I have just started working for Surrey Council. My role is quite exciting as I get to work with children and young people, families, carers, council staff and partner organisations to make sure your experiences (the good and the bad) help to improve the support we provide for you both now and in the future.”

Frankie is here to meet you today and answer any questions you have. She will be here for about 30mins from 5:30pm 😊





Mental Health Support Team - Request for Support Form Review

The Mental Health Support Teams have asked us to get feedback from children and young people on their request for support form.

The form is used in an education environment to get access to mental health support. The support is limited to mental health and wellbeing and doesn't offer 'in crisis' support.

A number of questions are asked so that the teams can see what level of support children and young people need and so that they can signpost correctly.

What are views and feelings on this form?

(Screen share will be used to show the form)





Check Out

- **Do you feel like your voice has been heard?**
- **What are your plans for the evening?**
- **Is there anything else you would like to add or ask?**
- **Do you need any help this week?**





Virtual ATLAS



THANK YOU!

"SEE" YOU NEXT WEEK!



Meet the ATLAS staff!



Sabrina Peters

Additional Needs and Disabilities Participation Officer

Email: sabrina.peters@surreycc.gov.uk

Work Mobile: 07815 650746

Working Hours: 9 am—5 pm Mon, Tues, Thurs, Fri.
11am—7pm Weds.



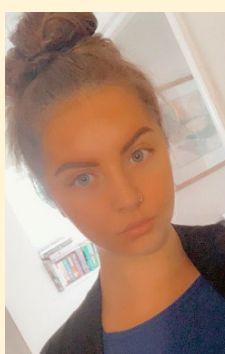
Sarah Foreman

*User Voice & Participation Bank Worker
Lead Facilitator for ATLAS*

Email: sarah.foreman@surreycc.gov.uk

Work Mobile: 07812 486486

Working Hours: Flexible.



Holly Kirtley

*User Voice & Participation Apprentice
Lead Apprentice for ATLAS*

Email: holly.kirtley@surreycc.gov.uk

Work Mobile: 07971 714687

Working Hours: 9 am—5 pm Mon, Tues, Thurs, Fri.
11am—7pm Weds.

Other members of the User Voice and Participation Team also support ATLAS!

